

# AVAILABLE SITE

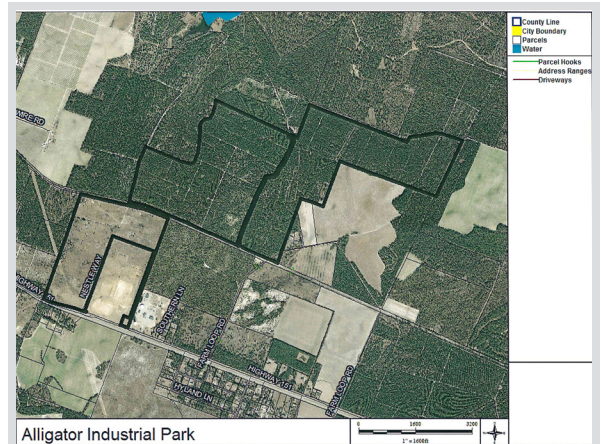


105 Green Street  
Chesterfield, SC 29709  
843-623-6500  
[www.chesterfieldcountysc.org](http://www.chesterfieldcountysc.org)

## ALLIGATOR INDUSTRIAL PARK



<b>Location</b>	26009 Highway 151, McBee, SC 29101
<b>Purchase Price</b>	\$8,000 - \$10,000/acre
<b>Site Size</b>	497 acres, developable 429.50 acres
<b>Water</b>	Alligator Rural Water & Sewer - 24" line
<b>Sewer</b>	Alligator Rural Water & Sewer - 14" line
<b>Electricity</b>	Duke Energy Progress
<b>Natural Gas</b>	SCE&G
<b>Fiber</b>	Sandhill Telephone Cooperative
<b>Connectivity</b>	
<b>Highway</b>	Highway 151 (4 lanes)
<b>Interstate</b>	1-20 (26 miles)
<b>Rail</b>	CSX Transportation
<b>Air</b>	Florence Regional Airport - 38 miles
<b>Nearest Port</b>	56 miles



**Kim Burch, Executive Director • Chesterfield County Economic Development**  
843-623-6500 (office) • 843-680-0282 (cell) • [kburchatccc@shtc.net](mailto:kburchatccc@shtc.net)