

AVAILABLE SITE

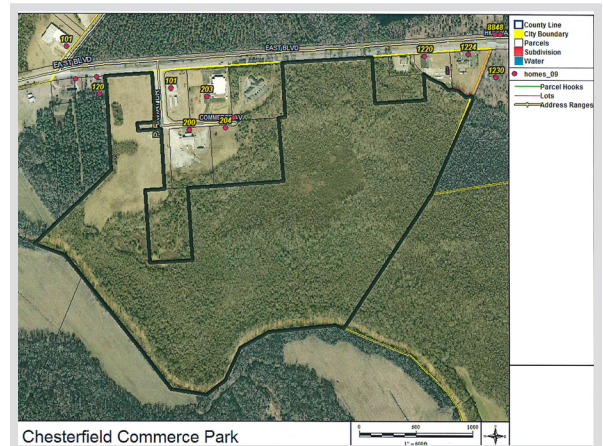


105 Green Street
Chesterfield, SC 29709
843-623-6500
www.chesterfieldcountysc.org

CHESTERFIELD COMMERCE PARK



Location	Highway 9, Cheraw, SC 29520
Purchase Price	\$10,000 - \$20,000/acre
Site Size	60 acres, 50 additional acres available
Water	Chesterfield County Rural Water - 8" line
Sewer	Town of Cheraw - 6" line
Electricity	Duke Energy Progress
Natural Gas	SCE&G
Fiber	Sandhill Telephone Cooperative
Connectivity	
Highway	Highway 9 (4 lanes)
Interstate	I-20 (43 miles)
Rail	None
Air	Florence Regional Airport - 53 miles
Nearest Port	47 miles



Kim Burch, Executive Director • Chesterfield County Economic Development
843-623-6500 (office) • 843-680-0282 (cell) • kburchatccc@shtc.net