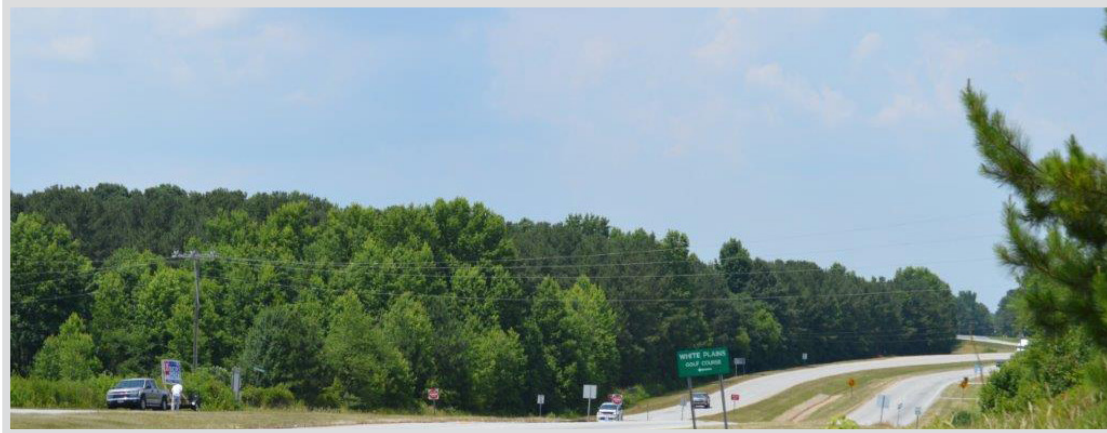


AVAILABLE SITE

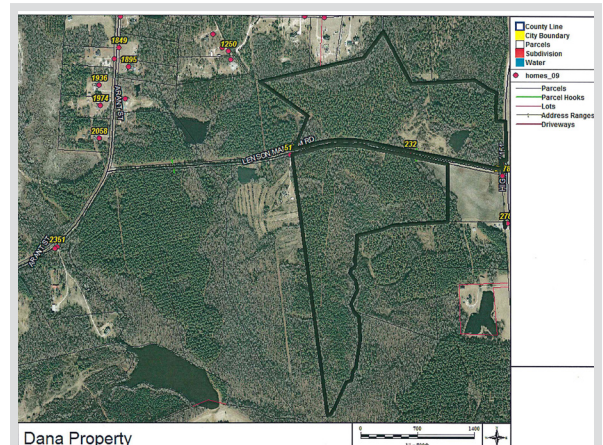


105 Green Street
Chesterfield, SC 29709
843-623-6500
www.chesterfieldcountysc.org

DANA PROPERTY



Location	Highway 151, Pageland, SC 29728
Purchase Price	\$4,500 - \$5,500/acre
Site Size	101.50 acres
Water	Chesterfield County Rural Water - 12" line
Sewer	Town of Pageland - 4" line
Electricity	Lynches River Electric Cooperative
Natural Gas	SCE&G
Fiber	Sandhill Telephone Cooperative
Connectivity	
Highway	Highway 151 (4 lanes)
Interstate	I-77 (42 miles)
Rail	None
Air	Charlotte Douglas International Airport - 52 miles (FTZ-57)
Nearest Port	75 miles



Kim Burch, Executive Director • Chesterfield County Economic Development
843-623-6500 (office) • 843-680-0282 (cell) • kburchatccc@shtc.net