

AVAILABLE SITE

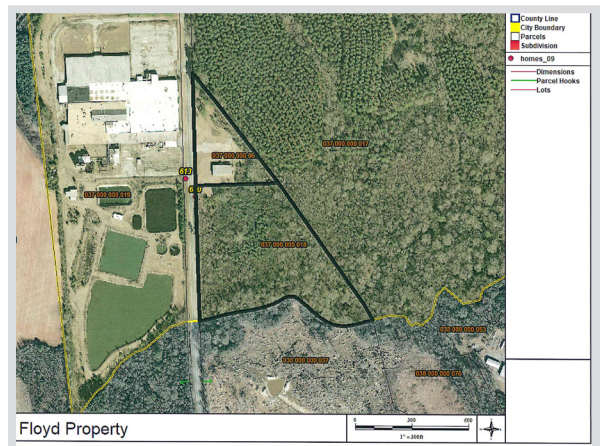


105 Green Street
Chesterfield, SC 29709
843-623-6500
www.chesterfieldcountysc.org

FLOYD PROPERTY



Location	620 South Main Street, Jefferson, SC 29718
Purchase Price	\$150,000
Site Size	11.9 acres
Water	Town of Jefferson - 6" line
Sewer	Town of Jefferson - 12" line
Electricity	Duke Energy Progress
Natural Gas	SCE&G
Fiber	Sandhill Telephone Cooperative
Connectivity	
Highway	Highway 151 (4 lanes)
Interstate	I-20 (40 miles)
Rail	None
Air	Florence Regional Airport - 54 miles
Nearest Port	77 miles
Additional Info	Commercial building located on property



Kim Burch, Executive Director • Chesterfield County Economic Development
843-623-6500 (office) • 843-680-0282 (cell) • kburchatccc@shtc.net