

# AVAILABLE SITE

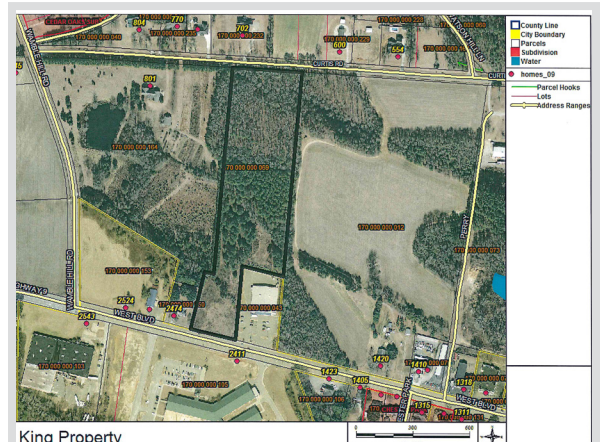


105 Green Street  
Chesterfield, SC 29709  
843-623-6500  
www.chesterfieldcountysc.org

## KING PROPERTY



<b>Location</b>	West Boulevard, Chesterfield, SC 29709
<b>Purchase Price</b>	\$75,000 for 8 acres; \$220,000 for 2 +/- acres of road frontage
<b>Site Size</b>	10.80 acres
<b>Water</b>	Chesterfield County Rural Water - 12" line
<b>Sewer</b>	Chesterfield County Rural Water - 8" line
<b>Electricity</b>	Duke Energy Progress
<b>Natural Gas</b>	None
<b>Fiber</b>	Sandhill Telephone Cooperative
<b>Connectivity</b>	
<b>Highway</b>	Highway 9 (4 lanes)
<b>Interstate</b>	I-95 (45 miles)
<b>Rail</b>	None
<b>Air</b>	Florence Regional Airport - 51 miles
<b>Nearest Port</b>	53 miles



Kim Burch, Executive Director • Chesterfield County Economic Development  
843-623-6500 (office) • 843-680-0282 (cell) • kburchatccc@shtc.net